

Name: Key

LEARNING LOG

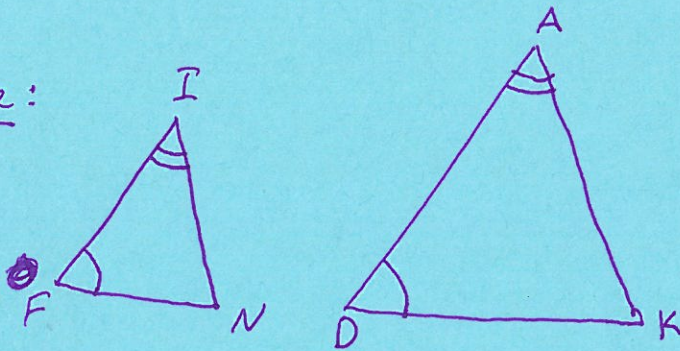
Chapter: 3

Date: 10/24/14

Title of Learning Log: AA ~ and SAS ~

AA ~ : If 2 \angle s of 1 Δ are \cong to the 2 corresponding \angle s of another Δ , then the Δ s are ~.

Example:



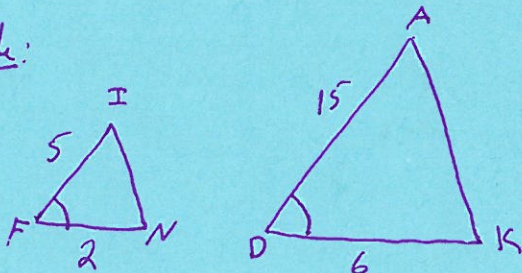
$$\angle F \cong \angle D$$

$$\angle I \cong \angle A$$

$\therefore \Delta FIN \sim \Delta DAK$
by AA ~

SAS ~ : If 2 Δ s have 2 pairs of corresponding sides that are proportional, and have \cong included \angle s, then the Δ s are ~.

Example:



$$\frac{\overline{FI}}{\overline{DA}} = \frac{\overline{FN}}{\overline{DK}}$$

$$\angle F \cong \angle D$$

or $\frac{5}{15} = \frac{2}{6}$
 \downarrow
 $30 = 30 \checkmark$
 $\therefore \Delta FIN \sim \Delta DAK$
by SAS ~

Checklist:

- Did I answer ALL parts of the Learning Log?
- Did I explain clearly?
- Did I provide an example and/or use multiple representations?
- Did I use complete sentences?