

PARALLEL LINES

FOR EACH PROBLEM, STATE THE RELATIONSHIP BETWEEN THE ANGLES. THEN SET UP AN EQUATION TO SOLVE FOR X. AFTER YOU FIND X, FIND THE MEASURE OF THE TWO ANGLES. REMEMBER THE TYPES OF EQUATIONS WE HAVE LEARNED.

EQUATION SET-UP

CONGRUENT ANGLES: ALTERNATE INTERIOR, ALTERNATE EXTERIOR, CORRESPONDING, VERTICAL

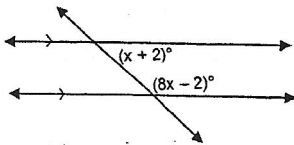
$$\text{ANGLE} = \text{ANGLE}$$

SUPPLEMENTARY ANGLES: SAME SIDE INTERIOR, LINEAR PAIR

$$\text{ANGLE} + \text{ANGLE} = 180$$

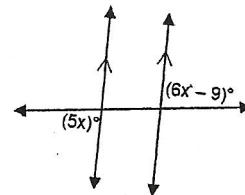
1. ANGLE RELATIONSHIP

X=



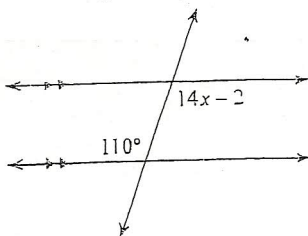
2. ANGLE RELATIONSHIP

X=



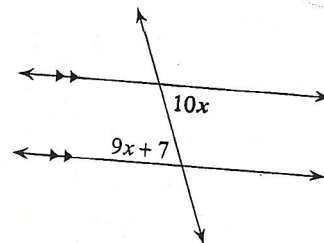
3. ANGLE RELATIONSHIP

X=



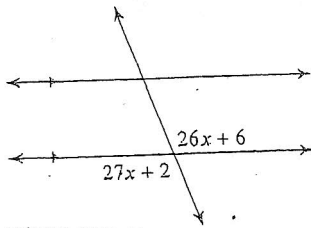
4. ANGLE RELATIONSHIP

X=



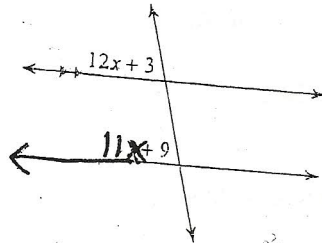
5. ANGLE RELATIONSHIP

X=



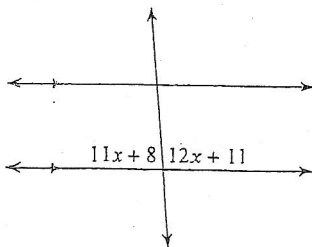
6. ANGLE RELATIONSHIP

X=



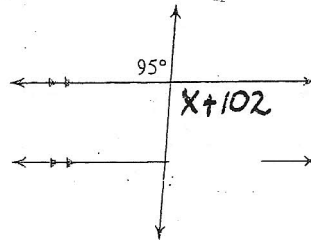
7. ANGLE RELATIONSHIP

X=



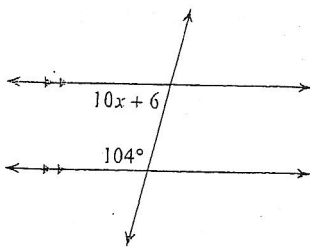
8. ANGLE RELATIONSHIP

X=



9. ANGLE RELATIONSHIP

X=



10. ANGLE RELATIONSHIP

X=

