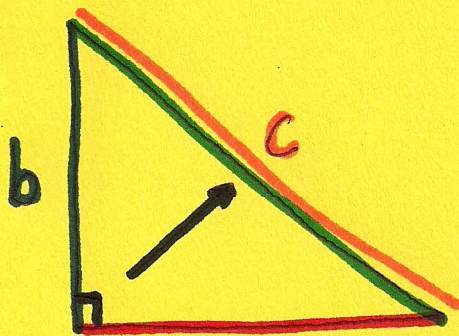


LEARNING LOG

Chapter 2

Date 10/7/14

Title of Learning Log Pythagorean Theorem



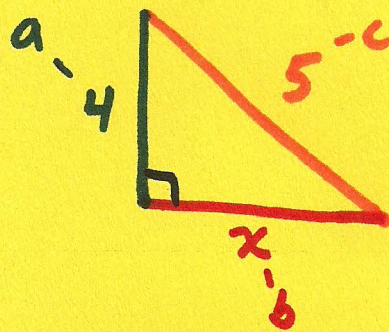
$$\text{leg}^2 + \text{leg}^2 = \text{hyp.}^2$$

$$a^2 + b^2 = c^2$$

<u>Legs</u>	<u>Hypoth</u>
a	c
b	

• Legs make up the right angle.

• Hyp. is always across from right angle.



$$4^2 + x^2 = 5^2$$

$$16 + x^2 = 25$$

$$-16 \quad -16$$

$$\sqrt{x^2} = \sqrt{9}$$

$$x = 3$$

* Only for right triangles *

CheckList:

- Did I answer ALL parts of the Learning Log?
- Did I provide an example and/or use multiple representations?
- Did I explain clearly? (*REREAD your work*)
- Did I use complete sentences?