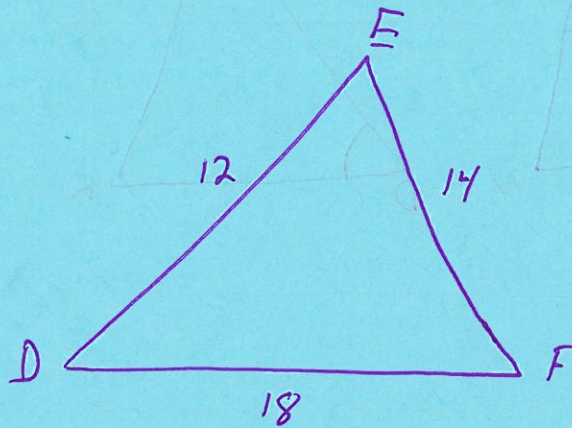
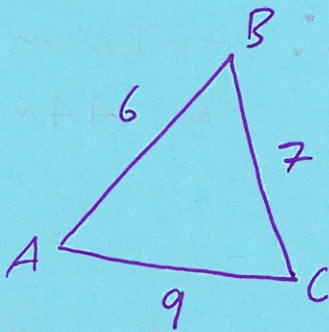


LEARNING LOG

Chapter: 3Date: 10/31/14Title of Learning Log: Flowchart of SSS

SSS: If two triangles have all 3 pairs of corresponding sides that are proportional (equal ratios), then the ~~triangles~~ are similar.



$$\frac{9}{18} = \frac{1}{2}$$

$$\frac{7}{14} = \frac{1}{2}$$

$$\frac{6}{12} = \frac{1}{2}$$

$$\triangle ABC \sim \triangle DEF$$

SSS ~

Checklist:

- Did I answer ALL parts of the Learning Log?
- Did I explain clearly?
- Did I provide an example and/or use multiple representations?
- Did I use complete sentences?