

Name: Kay

# LEARNING LOG

Chapter: 4

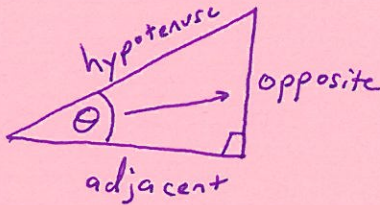
Date: 11/14/14

Title of Learning Log: The Tangent Ratio

• Slope Ratio = Tangent Ratio (Same Thing!)

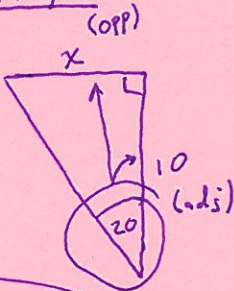
$$\tan(\theta) = \frac{\text{opposite}}{\text{adjacent}} = \frac{\Delta y}{\Delta x}$$

\* Adjacent side is NEVER the hypotenuse!



\* Opposite and Adjacent form the right angle!

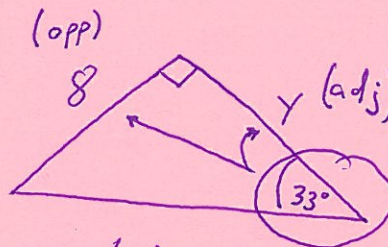
Example



~~$$\tan(20) = \frac{x}{10}$$~~

$$x = 10 \tan 20$$

$$x = 3.6$$



$$\frac{\tan(33)}{1} = \frac{8}{y}$$

$$\frac{8}{\tan(33)} = \frac{y(\tan(33))}{\tan(33)}$$

$$12.3 = y$$

### Checklist:

- Did I answer ALL parts of the Learning Log?
- Did I explain clearly?
- Did I provide an example and/or use multiple representations?
- Did I use complete sentences?